

COMPASS

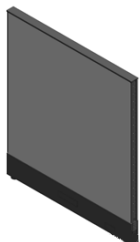
STATEMENT OF LINE

CALCTRA

Career Training | Quality Products | Changed Lives

SPACE DIVISION

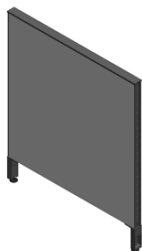
Standard Fabric Panel



H: 34", 42", 50", 66", 82"
W: 24" - 72"

*66"H available up to 60"W
*82"H available up to 48"W

Elevated Fabric Panel



H: 34", 42", 50", 66", 82"
W: 24" - 72"

*66"H available up to 60"W
*82"H available up to 48"W

Standard Laminate Panel



H: 34", 42", 50", 66", 82"
W: 24" - 48"

*82"H available up to 36"W

Elevated Laminate Panel



H: 34", 42", 50", 66", 82"
W: 24" - 48"

*82"H available up to 36"W

Standard Segmented Laminate Panel



H: 34", 42", 50", 66", 82"
W: 24" - 60"

*82"H available up to 36"W

Elevated Integrated Laminate Panel



H: 34", 42", 50", 66", 82"
W: 24" - 60"

*82"H available up to 36"W

Standard Segmented Fabric Panel



H: 34", 42", 50", 66", 82"
W: 24" - 60"

*82"H available up to 48"W

Elevated Integrated Fabric Panel



H: 34", 42", 50", 66", 82"
W: 24" - 60"

*82"H available up to 48"W

Solid Single Gallery Panel



H: 34", 42", 50"
W: 26" - 74"

Solid Double Gallery Panel



H: 34", 42", 50"
W: 42" - 146"

Woodgrain Single Gallery Panel



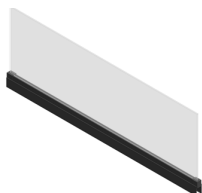
H: 34", 42", 50"
W: 26" - 56"

Woodgrain Double Gallery Panel



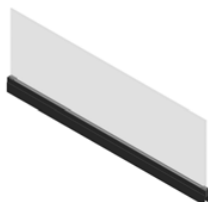
H: 34", 42", 50"
W: 42" - 110"

Frameless Glass Standard Panel Mount



H: 8", 16", 20"
W: 24" - 72"

Frameless Glass Gallery Panel Mount



H: 8", 16"
W: 24" - 60"

Hinge Door



H: 82"
W: 36", 42"

Sliding Door



H: 66"
W: 30", 36", 42"

WORKSURFACES

Transaction Top



W: 24" - 60"
D: 15"

Straight Worksurface



W: 24" - 96"
D: 20", 24", 30"

Straight Worksurface with Grommets



W: 24" - 96"
D: 20", 24", 30"

Unitized Curved Worksurface with Grommets



A: 36" B: 54" - 96"
C: 24" D: 24"
RH Shown

5 Corner Curved Worksurface with Grommet



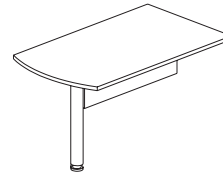
A: 36" - 48" B: 36" - 48"
C: 24" - 30" D: 24" - 30"

5 Corner Straight Worksurface with Grommet



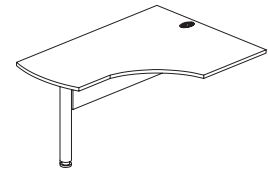
A: 36" - 48" B: 36" - 48"
C: 24" - 30" D: 24" - 30"

Panel Mounted D-Table



W: 60" - 84"
D: 30" - 36"

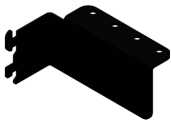
J-Table



W: 60" - 78"
D: 24" - 30"

WORKSURFACE SUPPORTS

Corner Bracket



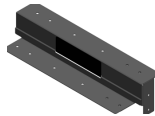
H: 3"
W: 4"

Mending Plate



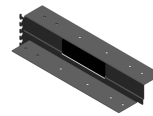
D: 4"
W: 6"

Return Support Gallery Panel Mount with Power



H: 3"
W: 24", 30"

Return Support Standard Panel Mount with Power



H: 3"
W: 24", 30"

Storage Support Bracket



H: 3"
D: 1"

Cantilever



H: 8"
D: 16", 22"

Single Post



Ladder Leg



H: 25", 28"
D: 20", 24", 30"

Laminate Gable Leg



H: 25", 28"
D: 20", 24", 30"

Wrap Gable



H: 25", 28"
D: 20", 24", 30"

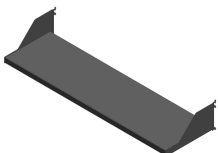
Pedestal to Panel Bracket



H: 28"
W: 1", 7"

STORAGE

Steel Shelf



H: 6"
W: 30" - 60"
D: 12"

Flipper Cabinet



H: 16"
W: 30" - 60"
D: 14"

SEE **MERGE** STATEMENT OF
LINE FOR ADDITIONAL
STORAGE OPTIONS

CONNECTIONS & TRIMS

Standard End Trim



H: 34", 42", 50", 66", 82"
W: 2"

End Trim with Coat Hook



H: 34", 42", 50", 66", 82"
W: 2"

End Trim (Partial)



H: 8", 16", 24", 32", 40", 48"
W: 2"

T Filler (Full)



H: 34", 42", 50", 66", 82"
W: 2"

T Filler (Partial)



H: 8", 16", 24", 32", 40", 48"
W: 2"

90° Filler (Full)



H: 34", 42", 50", 66", 82"
W: 2"

90° Filler (Partial)



H: 8", 16", 24", 32", 40", 48"
W: 2"

Straight Filler (Partial)



H: 8", 16", 24", 32", 40", 48"
W: 2"

90° A Panel Connector



90° B Panel Connector



180° A Panel Connector



180° B Panel Connector



3-way A Panel Connector



3-way B Panel Connector



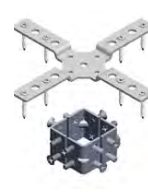
3-way C Panel Connector



3-way D Panel Connector



4-way A Panel Connector



4-way B Panel Connector



4-way C Panel Connector



4-way D Panel Connector



Gallery Panel Filler



H: 8", 16", 24", 32", 40", 48"
W: 1"

Top Cap



H: 2"
W: 2"

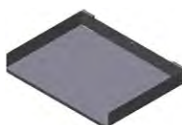
ACCESSORIES

Accessory Rail



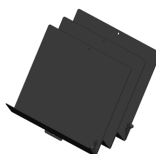
H: 3"
W: 24" - 60"

Paper Tray



L: 11"
W: 9" - 13"

3 Division Paper Sorter



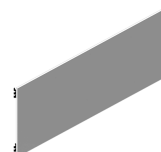
H: 11"
W: 10"
D: 10"

Pen Holder



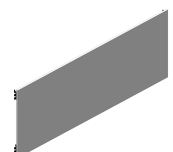
H: 4"
W: 4"
D: 2"

Tackboard



H: 7", 15"
W: 24" - 60"

Whiteboard



H: 15"
W: 24" - 60"

ELECTRICS

Horizontal Cable Manager



H: 1.5"
W: 12" - 72"

Data/Com



Power Module



Power Pole



H: 96", 120", 144"
W: 2"

Starter



L: 72", 168"

Connector Harness



L: 22"-181"

M/F Connector



L: 44", 122"

SEGMENT TYPES

Standard Panels



Elevated Panels

