



BOLTON™
Seating



Bolton Seating

Mid-Back

Weight	32 lbs
Width	26"
Depth	24"
Height	38.75 – 42.75"
Seat Width	20"
Seat Depth	16 – 19"
Seat Height	16 – 20" or 18 – 23"
Arm Height	7.5 – 10"
Lumbar Apex	8 – 10"

Details

- Weight-activated synchro-tilt mechanism (automatic tension) with four-position back-lock
- Center tension adjustable synchro-tilt mechanism with upright back-lock
- 3" seat depth adjustment
- Pneumatic seat height adjustment
- Armless, 1-D, 3-D, and 4-D arms in black and grey to match the frame color. The 4-D arm with polished element, adjusts in height, from side to side, front to back, and rotates. Once adjusted for proper fit the 4-D arm-cap will lock into place.
- Lumbar optional
- Headrest optional (high-back only)
- BIFMA level® certified
- CAL 117 or optional CAL 133 fire code compliance
- Certain pre-configured all-black models are in the Express Program (three-day ship)

*See pricelist for more details.



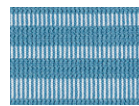
High-Back and Executive

Weight	34 lbs
Width	26"
Depth	24"
Height	41 – 45"
Seat Width	20"
Seat Depth	16 – 19"
Seat Height	16 – 20" or 18 – 23"
Arm Height	7.5 – 10"
Lumbar Apex	8 – 10"

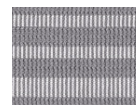
Bolton is available fully upholstered or with a mesh back. See ais-inc.com for upholstery options. Mesh options include:



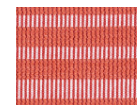
Graduated
Stripe-Black



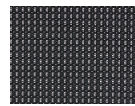
Graduated
Stripe-Blue



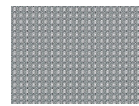
Graduated
Stripe-Grey



Graduated
Stripe-Orange



Solid-Black



Solid-Grey



Cover

Bolton Seating:
Fedora | Fawn



Pages 2-3:

Laminate: Field Elm **Reception Stack:**
Black **Beam & Height-Adjustable**
Legs: Satin White **Glass:** Frosted
Bolton Seating: Fedora | Fawn **Bolton**
Conference Seating & Chatham Cove:
Wellesley | Chili