

8700 Series

CAFETORIUM CHAIR



products meet or exceed applicable ANSI/BIFMA standards

A New *Futuristic Look* in

COLORS

that will bring your Cafetorium to Life!

SLEEK POLYPROPYLENE PLASTIC BACK DESIGN PROVIDES ERGONOMIC SUPPORT

Introducing...

The Cafetorium Chair

The Series #8700 Cafetorium Chair

Perfect for cafeteria, auditorium, conference and lecture hall seating, this exciting design will dress up your facility, and is robust enough to last and last.

An upholstered, plush vinyl seat provides comfortable, extended period seating and is matched to a modern-styled polypropylene plastic back that provides ergonomic support. Extremely lightweight at just 10 lbs., its 16-gauge frame provides support where you need it and is built to exceed ANSI BIFMA standards. Store or transport up to 35 chairs in the optional **Model #DY87**, cradle-style dolly. Floor protector glides are made of TPU for sensitive floors, and include built-in gangers for multiple chair setup.



Chair Dimensions:
 WIDTH 20"
 DEPTH 19 1/4"
 SEAT HEIGHT 17 1/4"
 BACK HEIGHT 30 1/4"

4 MODEL #8710-11-10 SHOWN

3 IN-STOCK CHOICES



CUSTOM COLORS CHOICES FOR COUNTLESS COMBINATIONS

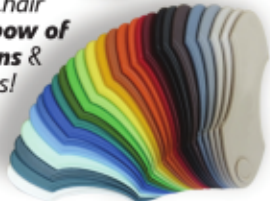
FRAMES
 BLACK CHROME SILVER WHITE

Custom options require only a 6-8 week lead time! MINIMUM: 300 PCS

BACKS

P01	P02	P03	P04	P05	P06	P07	P08	P09
P10	P11	P12	P13	P14	P15	P16	P17	P18
P19	P20	P21	P22	P23	P24	P25	P26	P27

Customize your Cafetorium Chair with a **Rainbow of Color Options & Combinations!**



SEATING (VINYL / FABRIC)

V01	V02	V03	V04	V05	V06	V07	V08	V09	V10	V11	V12	V13			
F01	F02	F03	F04	F05	F06	F07	F08	F09	F10	F11	F12	F13	F14	F15	F16
F17	F18	F19	F20	F21	F22	F23	F24	F25	F26	F27	F28	F29	F30	F31	F32

Optional Cradle-style Dolly Available
 MODEL #DY87

STORAGE OR TRANSPORT - up to 35 chairs high!

- DIMENSIONS - 28"L X 18 1/2"W X 26"H
- WEIGHT - 12 1/2" LBS.
- WEIGHT CAPACITY - 350 LBS.
- 7/8" SQUARE TUBING
- 7/8" OD ROUND TUBING
- FRAME FINISH - GREY POWDER COATING

bay product